



How to stop hating &

Start

Loving

Third-Party

Delivery

an e-book for enterprise
restaurant operators

The birth of

Third-Party Delivery Drama

The evolutions and ruckus created by third-party delivery happened in three very short, albeit dramatic Acts. So grab your popcorn and take a seat folks, this drama is show-stopping!

Act 1

Hello Delivery,
Goodbye Sanity

Act 2

We Need a Savior.
Enter Middleware.

Act 3

Drama Be Gone.
The Direct Third-
Party Delivery
Solution.



Act 1

HELLO DELIVERY.
GOODBYE SANITY.

Stop hating & Start Loving 3P Delivery

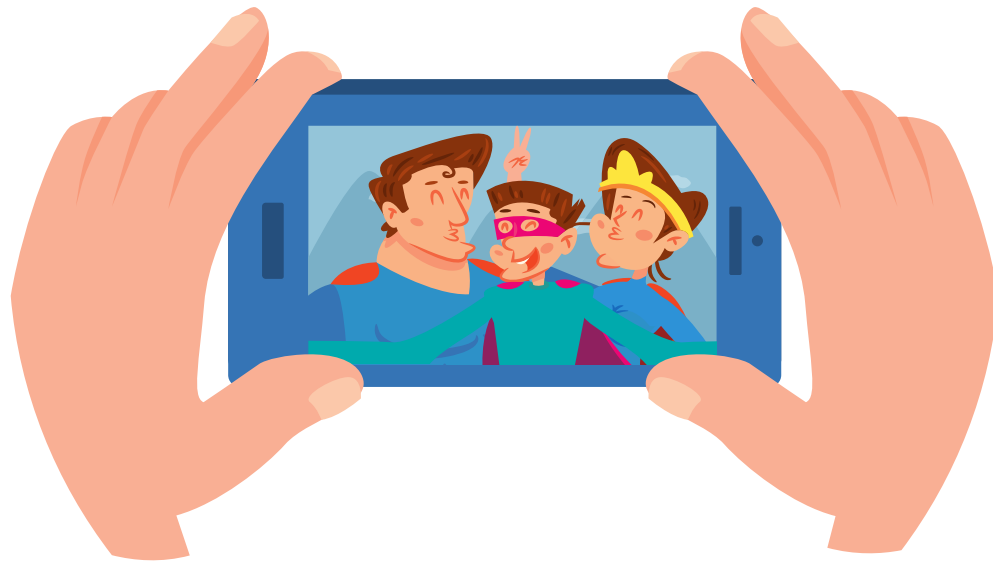
The third-party delivery business has been highly disruptive for all restaurant operators—after all they flat out injected themselves right into the middle of your business and some of them have indeed overstepped their bounds...(don't we all?!)

But the fact is that delivery is here to stay (and grow) and we all need to stop blaming them for causing problems and start working on a collaborative solution that's going to meet everyone's needs.

The solution is rooted in consistent cross-channel guest experiences and stronger revenue opportunities, driven by a unifying technology that won't drain operator budgets and time.

Act I: Hello Delivery, Goodbye Sanity (for Operators)

In the first act, our protagonist “third-party delivery” burst onto the scene—somewhat unexpectedly like AirBnB and Uber—and was eagerly embraced and welcomed by all as a “Hero,” one that was always there in the palm of our hands.



Our delivery hero was able to satisfy a previously unmet desire for convenience and speed by quenching consumers’ food cravings from wherever they were (uh, everywhere).

Restaurant operators similarly welcomed our Delivery Hero as it provided incremental revenue, access to guests previously unknown, and enhanced brand exposure.

Alas, Act I quickly turned into an epic star-studded drama when the Hero unwittingly was lured to the dark side.

The Downfall of our Hero and the Rise of the Dark Side

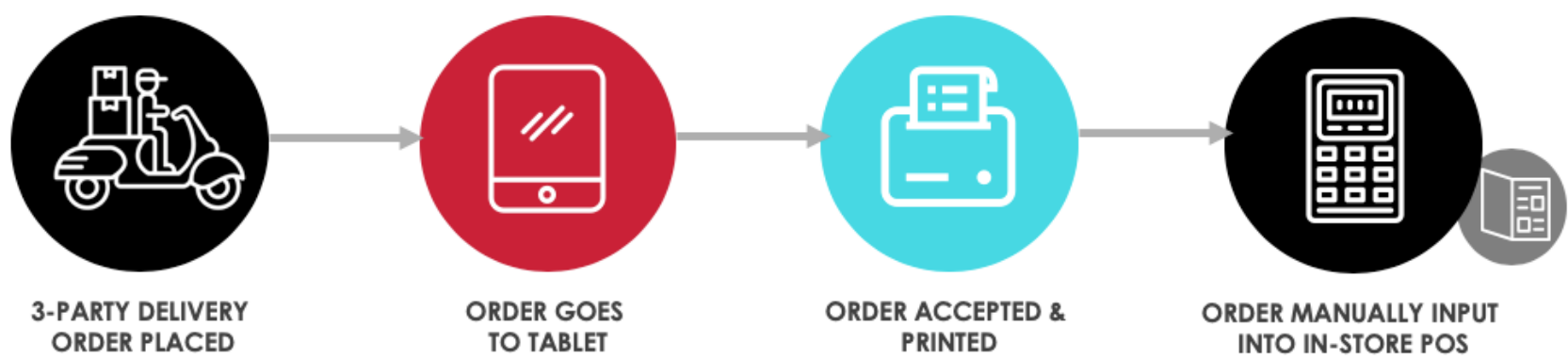
Although well intentioned, third-party delivery created three massive problems for operators:

- **Menu Management Mayhem.** Third-party delivery providers introduced their own individual menu system into the mix of already burgeoning order channels for operators. More menu systems meant more chaos and a disjointed ordering experience. Managing menu and food integrity, quality, and consistency across delivery channels became very challenging for operators. And when menu blunders happened, guests didn't blame our Hero, but instead blamed the restaurant brands.
- **Tablet Hell.** Each delivery company placed a physical tablet in the restaurant to process orders. This created crowded countertops ("tablet hell") and more in-store labor to manage the manual process of printing delivery orders and inputting them directly into the in-store POS.
- **Manual and Inaccurate Order Entry (+Annoyed Guests).** The process of printing and re-keying the delivery orders from tablets to the in-store POS make order errors more likely through things like "fat-fingering" or human error. We all know that inaccurate order entry results in loss of transaction level data, making accurate reporting even more challenging than it already is.

The nasty finger pointing began: guests blamed brands and brands blamed delivery.

Other technology-related problems introduced for operators included the potential for lost delivery tickets (oops, I misplaced the printout); under-served guests (I'm too focused on this tablet right now) and franchisor reporting challenges (where's the data?).

Traditional delivery integrations are one-directional



One-way data syncs create menu management mayhem

Figure 1

To avert these Act I crises, some resource-rich restaurant brands opted to create their own mobile delivery app or build their own custom integrations with particular delivery providers.

Some have spent hundreds of millions on solutions trying to fix these menu management and technology integration issues.

For example, Yum Brands (owner of Taco Bell, KFC, and Pizza Hut) jumped on the delivery growth engine last year and made a huge investment (+\$200M) with GrubHub by integrating the delivery service right into their POS.

This gave their guests unprecedented access to their food, reduced the redundant order-entry processes in-store, and gave them access to the data.

Yes, Yum Brands has the marketing and financial power to make huge investments, but this type of solution shouldn't be exclusive to big brands able to make hundred-million-dollar investments into their tech.

Act 2

WE NEED A SAVIOR.
ENTER MIDDLEWARE.

Some Limitations of Middleware...

- **You Need an Exact Match between Restaurant POS Menu and Delivery Menu items.** For the delivery order to be accepted by the restaurant POS with middleware, there must be an exact match between the item-level data in both menus. If there is anything off (i.e., name or price), the order will be rejected by the POS.
- **Some Changes can ONLY be Done at the Tablet Level.** There are certain menu changes that cannot be done with the middleware solution; they can only be done directly on the tablets. Thus requiring human intervention and more labor/resources that get distracted from serving your guests. It doesn't really remove the tablets.
- **Limited Menu Depth.** Most third-party delivery menus have limited item menu depth. You can add or subtract items and modifiers. This is beginning to change, but until it's more mainstream, fluidly syncing 2-item menu depth with much deeper restaurant POS is not a seamless or frictionless process.

Our Act II saviors were well intentioned, but middleware created a new set of problems for operators. It required them to invest in more tech platforms (more cost), create new integrations (more risk), and compromised data integrity (reporting inaccuracy)—all bottle-necking revenue generation.

Middleware provides intermediary solution removing some manual processes



Integrations are still one directional requiring significant menu management oversight

Figure 2

As shown in Figure 2, the middleware APIs are often one-directional, requiring significant oversight to ensure the order management process (menu items) and operational data sync properly between the tablets, delivery sites, and restaurant systems.

**Middleware, it
turned out,
was not the
hero we
thought it was.**



Act 3

THE DIRECT
THIRD-PARTY
DELIVERY SOLUTION

Act III. Drama Be Gone. The Direct Third-Party Delivery Solution.

Yes, happy endings are possible! Our third act opens with a key realization.

The Hero in our story all along was never third-party deliveries, middleware, or even POS companies like us.

The Hero in this story is your restaurant brand.



And the solution to your problem? A unified food experience enabled by a POS platform that is intentionally built with bi-directional integrations with your third-party delivery apps. No need for a middleware manager.

Although there are plenty of options for POS out there for you, there are few companies solving for the core issues faced specifically by enterprise fast-casual and QSR operators.

Qu's unified food experience ensures one set of clean, normalized data flows fluidly between the two systems and finally solves for the core issues we discussed earlier.

HOW DOES QU MAKE THIS POSSIBLE?

Unified Menu Management

One menu. Across all channels.

Bi-Directional Integrations

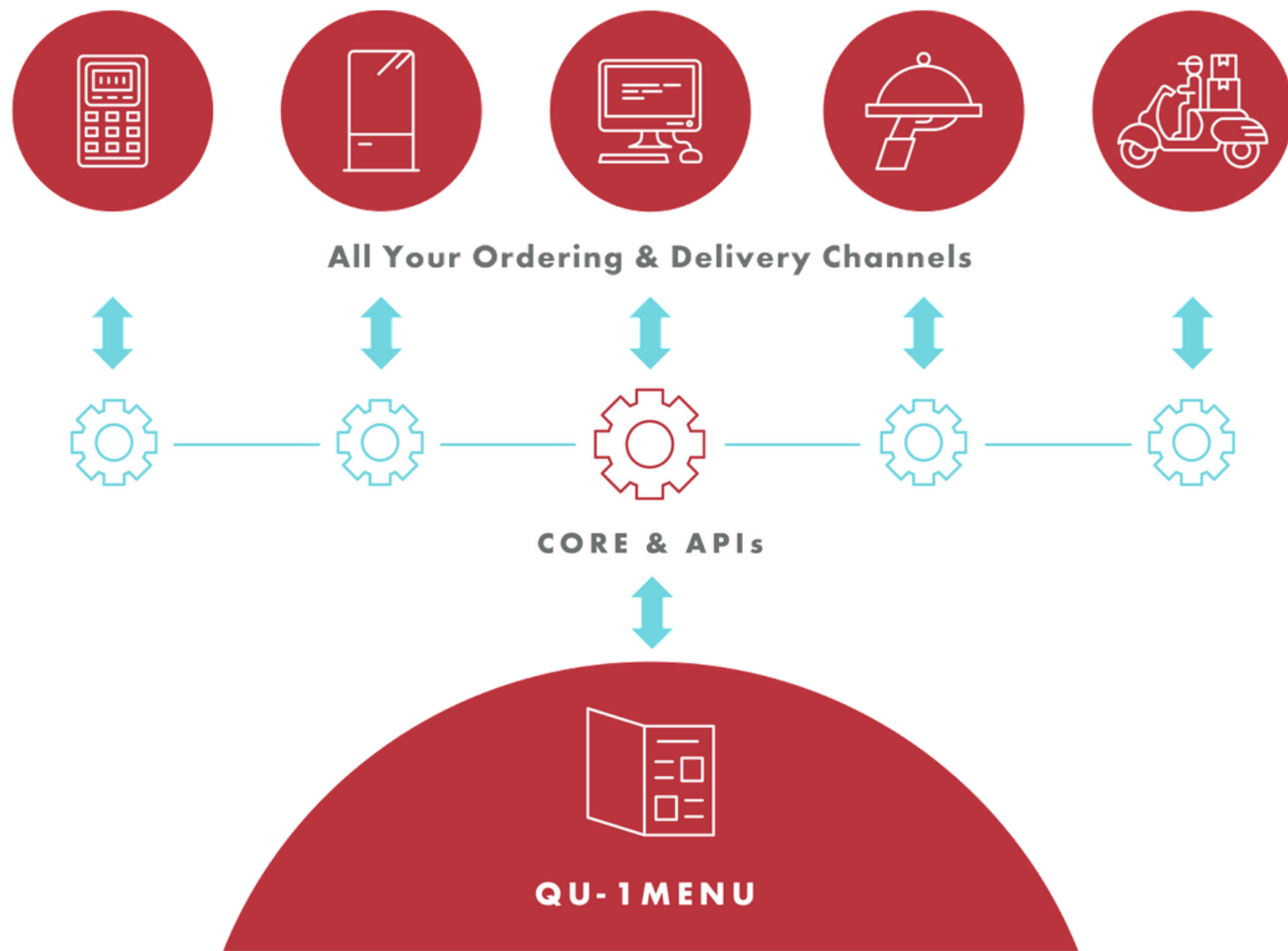
One core engine. A single source of truth for your data.

Centralized Management Hub

One command center for your entire enterprise.

Unified Menu Management.

Operators finally have access to a single unified menu that can exist across all of their channels: in-store, delivery, and other digital sites.



You can make menu updates universally across all desired channels and customize configuration settings to determine where and when items are displayed.

Qu's infinite depth of modifications allows for easy configurations across all channels. Your POS won't hold you back.

Bi-Directional Integrations.

Qu's open and modern API-first infrastructure means you can say goodbye to brittle integrations.

You no longer need multiple tablets on the counter for all your third-party delivery apps. **Hello, tablet heaven.**

Qu's APIs were written to work for all partners' needs, not one specific vendor or data call. The APIs leverage bi-directional data syncs that flow from one database and core processing engine in the cloud, enabling fluid data exchanges that keep your data clean.

The data is normalized between delivery and the POS system. No more worrying about menu mapping and order rejection.

This also means you finally have access to an integrated digital suite.



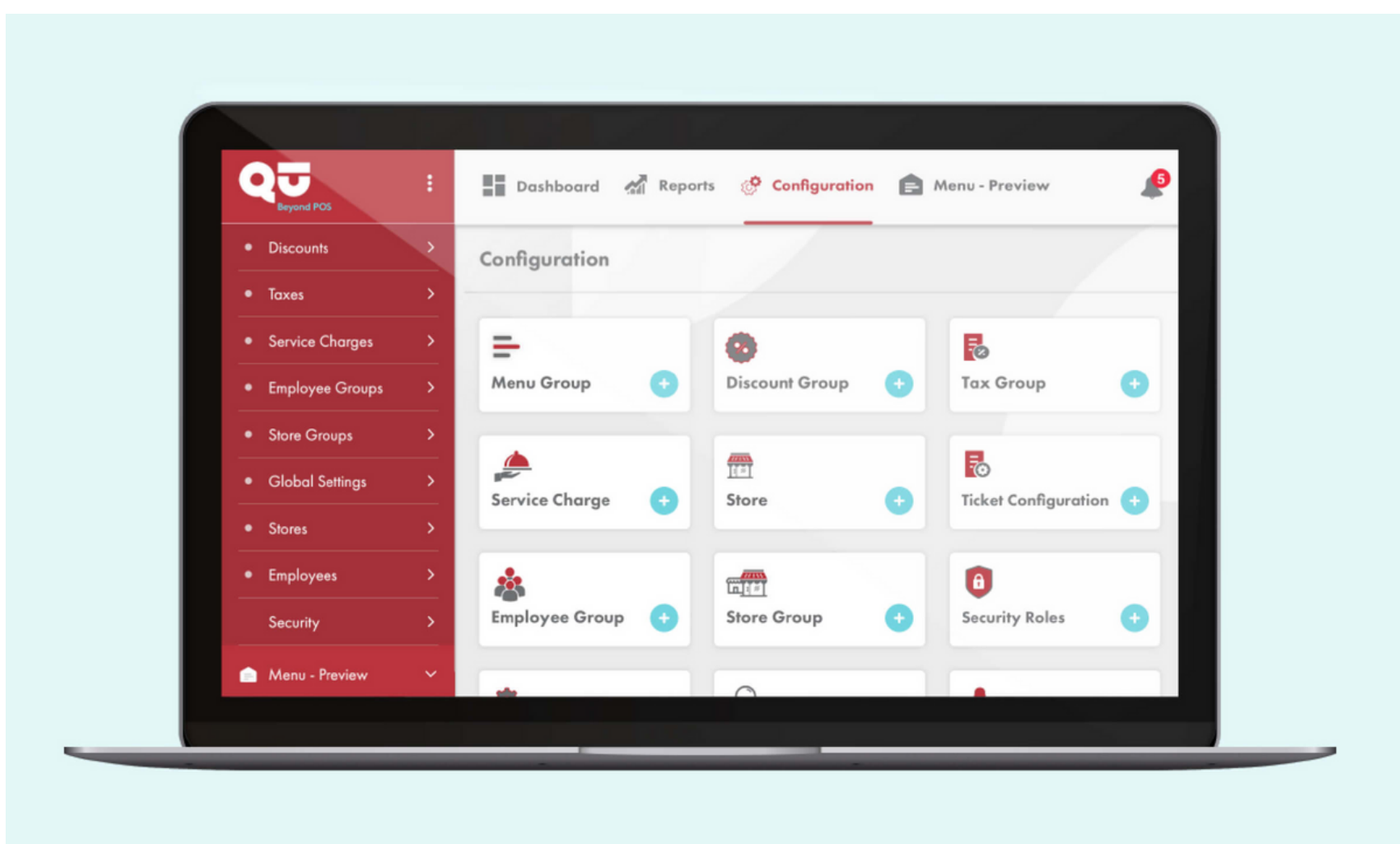
A Centralized Management Hub.

Having a central hub to manage your enterprise removes unnecessary redundancies.

Through Qu's Enterprise Management Hub, we enable highly dynamic menu items that are changeable based on context.

You can configure an item to have unlimited characteristics, which can be customized at any time, for any channel. For example, you can create unique pricing and availability, across multiple channels, without having to create multiple items.

Having dynamic items means you have access to unified data and insights, and can retain the integrity of a master menu for reporting purposes.



So say goodbye to manual and painstaking processes to update your menus. Now you can manage your business from one centralized hub.

The Benefits of Direct Third-Party Delivery Integration

The benefits of direct third party delivery integrations are hard to dispute:

- **Labor Efficiency** - Removes the need for labor to manage tablets and in-store employees focus 100% on serving live customers.
- **Order & Report Accuracy** - direct and automated menu mapping between delivery and POS systems increases order accuracy and reporting.
- **Cost Control** - avoid lost orders and lost revenue.
- **Revenue Acceleration** - with consistent and normalized data flowing between systems you can finally see and uncover opportunities for revenue growth.
- **Less Risk** - Fewer integrations means less risk for your business processes.

It's time to get back to delighting your guests and increasing your profits. Improve your efficiency AND reclaim the guest experience for third-party delivery with a system designed for your brand's growth, today, and into the future.

[Curtain Closes - Audience Cheers]



About Qu

Qu is transforming restaurant POS beyond its current fragmented state by delivering native technology solutions for all in-store and digital order channels. Powered by common APIs and a single core data engine, Qu frees enterprise operators to choose between best-in-class offerings, enabling the first unified food experience that works at the critical intersections of ordering, production and brand.

Our industry-first architecture for dynamic menu items and dynamic stores finally addresses the menu management mayhem faced by fast casual and quick service restaurant chains. And our data-driven guest experiences help operators unlock new revenue opportunities that drive healthier bottom lines.

Based in Bethesda, MD, Qu is backed by leading restaurant entrepreneurs as well as Silicon Valley investors that have also backed Google, Salesforce, Uber, and Dropbox.

